

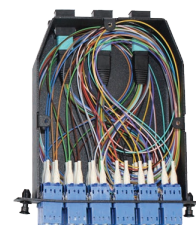
ODMTP/MPO Patch Panel



OD-K Plate



ODK-J Cassette



Overview

This High Density fiber patch panels are designed to accommodate high density applications in Data Centers and Telecommunication environments. This factory pre-populated and tested fiber patch panel saves on-site installation time and increase reliability, factory pre-loaded with Qty. 3 12/24/36 fiber LC Duplex OD MTP/MPO Cassettes or 12/24 OD-K Adapter Plates for quick implementations in 10/100G networks.

Features

- UP to 108 Fiber LC Ports in 1U
- Flexibility to Mix Adapter Plates with Cassettes in Patch Panel
- Available in SM, OM1, OM2, OM3 and OM4 fiber grades
- Easily Accessible MPO/MTP Ports for Connection to Trunk Cable
- Factory terminated and tested
- MPO/MTP components feature superior optical and mechanical properties

Specifications

Height / Width	1U (485mm*294mm*44mm)		
Quantity of Cassette/Plate	OD-J Cassette x 3	OD-K Plate x 3	Max Capacity 108
Operating Temperature	-20°C ~ +60°C		
Storage Temperature	-40°C ~ +70°C		
Humidity	90% at 30°C		
Air Pressure	70kPa – 106kPa		

OD-J Cassette Technical Specifications

	OD-J-1	OD-J-2	OD-J-3
Total Fiber Count	12	24	36
Front Adapter Type	LC Duplex	LC Duplex	LC Duplex
Front Port Count	6	12	18
Rear Adapter Type	MTP/MPO	MTP/MPO	MTP/MPO
Rear Port Count	1	2	3

OD-K Plate Technical Specifications

	OD-K-1	OD-K-2
Total Fiber Count	12	24
Front Adapter Type	LC Duplex	LC Duplex
Front Port Count	6	12